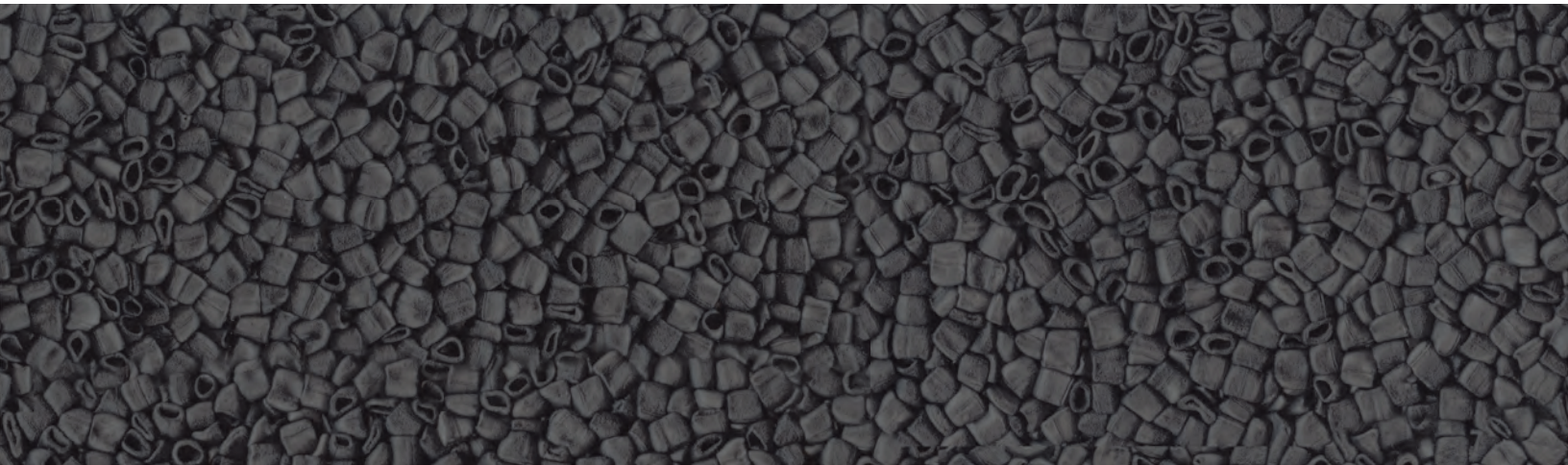
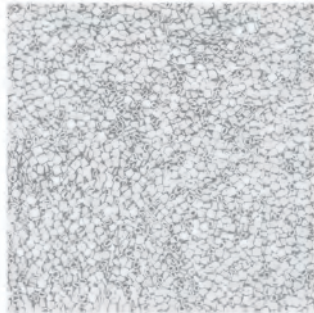
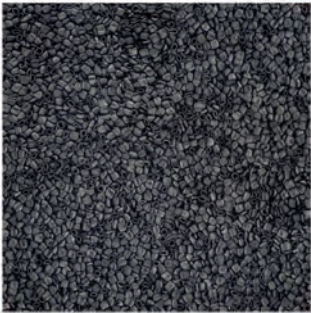




An entirely new kind of acoustic panel.





Use It Everywhere.



Industrial Applications

Cel™ panels are resilient, incredibly durable, and resistant to oils, grease, most chemicals and water. Cel™ panels are completely washable, such as with power washing equipment and detergents.

- Manufacturing plants
- Car wash facilities
- Machine shops
- Automobile dealerships
- Gun ranges
- Rooftop enclosures



New Construction & Retrofit

Cel™ panels are easily installed for improving sound control in environments such as gymnasiums, ice rinks, swimming pools, and other challenging environments.

- Gymnasiums
- Auditoriums
- Classrooms
- Indoor swimming pools
- Ice rinks
- Arenas, stadiums



Environmentally Sensitive Areas

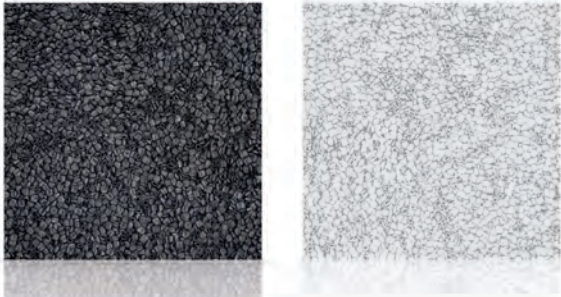
Cel™ panels are non-fibrous, and are ideal for use in environments sensitive to air borne particles such as clean rooms, laboratories, and food preparation areas.

- Manufacturing clean rooms
- Laboratories
- Computer rooms
- Food processing plants
- Food preparation areas
- Cafeterias, restaurants
- Chemical processing





Acoustic panels unlike any other.



- Non-fibrous
- Structurally rigid
- Water resistant
- Non-abrasive surface
- Class A Fire Retardant
- Both STC & NRC ratings
- Impact resistant
- Tackable surface
- Bacteria and fungi resistant

Durable, versatile & reliable.

Water Resistant

Cel™ panels resist moisture in all forms, whether humid environments or direct exposure to water, indoors or outdoors.

Non-Abrasive

Unlike some other rigid acoustic panels, Cel™ panels have a smooth, non-abrasive surface.

Flame Resistant

Cel™ Panels carry an ASTM E-84 Class A Fire Resistance rating.

Impact Absorption

Cel™ panels are resilient and able to repeatedly absorb energy; ideal for applications such as gymnasium walls or swimming pools.

Tackable

Cel™ panels can be punctured repeatedly with thumbtacks and push pins without damaging the surface.

Washable

Cel™ panels are easily cleaned with water and detergents. Gentle power washing is suitable in many environments.



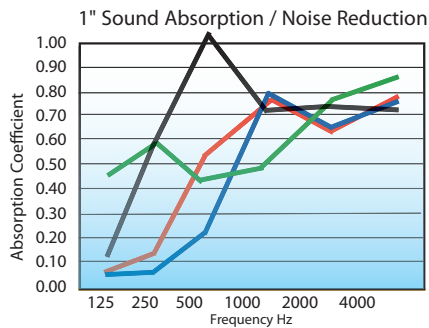


Cel™ Acoustic Performance

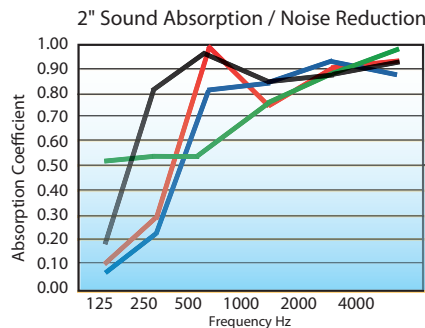
Sound Absorption / Noise Reduction

	Mount	125 Hz	250 Hz	500 Hz	1000 Hz	2000 Hz	4000 Hz	NRC*
Cel™ 1"	Wall Mounted	0.05	0.06	0.21	0.80	0.65	0.75	0.45
Cel™ 1"	Wall with 3/4" air space	0.06	0.13	0.51	0.79	0.62	0.79	0.50
Cel™ 1"	Wall with 1" EchoTouch™	0.11	0.58	1.07	0.71	0.74	0.72	0.80
Cel™ 2"	Wall Mounted	0.07	0.21	0.81	0.85	0.93	0.88	0.70
Cel™ 2"	Wall with 3/4" air space	0.10	0.29	0.99	0.74	0.90	0.93	0.75
Cel™ 2"	Wall with 1" EchoTouch™	0.17	0.81	0.97	0.85	0.89	0.92	0.90
Cel™ 1"	Ceiling E400	0.46	0.59	0.42	0.49	0.76	0.86	0.55
Cel™ 2"	Ceiling E400	0.51	0.52	0.52	0.77	0.89	0.98	0.70
Cel™ 1"	Wall C423 12" spacing	0.04	0.07	0.20	0.83	0.81	1.00	0.50
Cel™ 2"	Wall C423 12" spacing	0.09	0.21	0.82	1.11	1.11	1.12	0.80

*Noise Reduction Coefficient

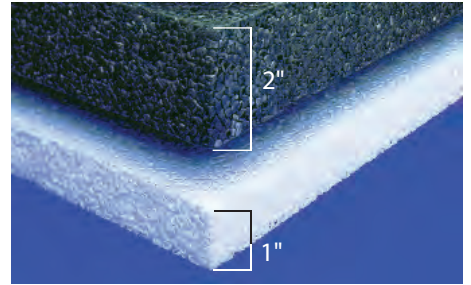


A 1" Wall C 1" Wall with 1" EchoTouch™
B 1" Wall with 3/4" air space D 1" Ceiling Mount



A 2" Wall C 2" Wall with 1" EchoTouch™
B 2" Wall with 3/4" air space D 2" Ceiling Mount

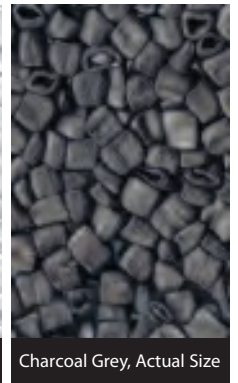
Sizes and Dimensions



Available in 1" and 2" thicknesses.
 Weight: 1" 1/4 lb./sf 2" 1/2 lb./sf
 Panels available: Nominal 2' x 2' and 2' x 4'.
 Quotes available for custom sizes.



White, Actual Size



Charcoal Grey, Actual Size

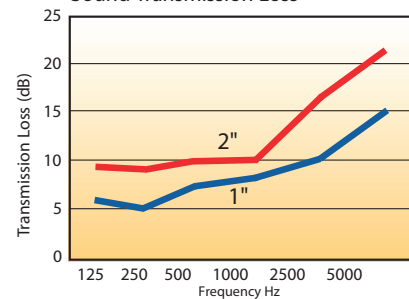
Sound Transmission Loss

	125 Hz	250 Hz	500 Hz	1000 Hz	2500 Hz	5000 Hz	STC* Rating
Cel™ 1"	6	5	7	8	10	15	9
Cel™ 2"	9	8	10	10	17	22	13
Cel™ with 5/8" gypsum both sides	27	27	29	31	32	45	32

*Sound Transmission Coefficient

Sound Transmission Loss independently tested to ASTM E-90 standards

Sound Transmission Loss



Flammability

Thickness	Flame Spread	Smoke Development	ASTM E-84 Class
1"	3	84	A
2"	5	113	A

This test data reflects performance of Cel™ acoustical panels under specific controlled test conditions and is subject to normal manufacturing variations. In addition, the numerical flame spread rating is not intended to be indicative of the characteristics that would be displayed by Cel™ acoustical panels under actual fire conditions.

Cel™ panels perform acoustically.

